

# Hip Fracture Mortality by Teaching Status of Treating Hospital

Katie Sheehan, PT PhD

CAHSPR Conference, May 12<sup>th</sup> 2016



Canadian Collaborative Study of  
Hip Fractures

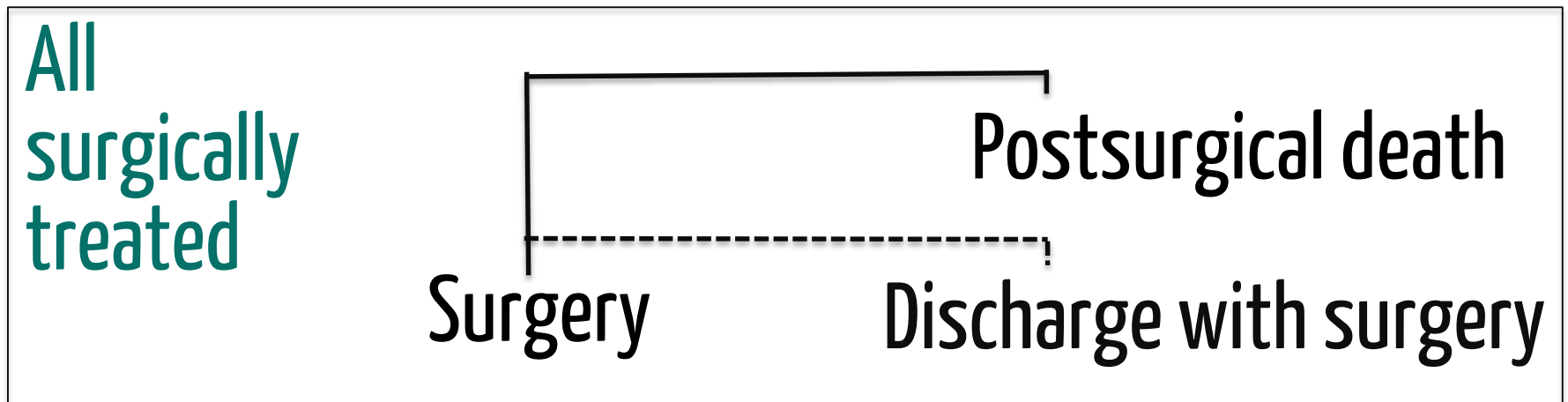
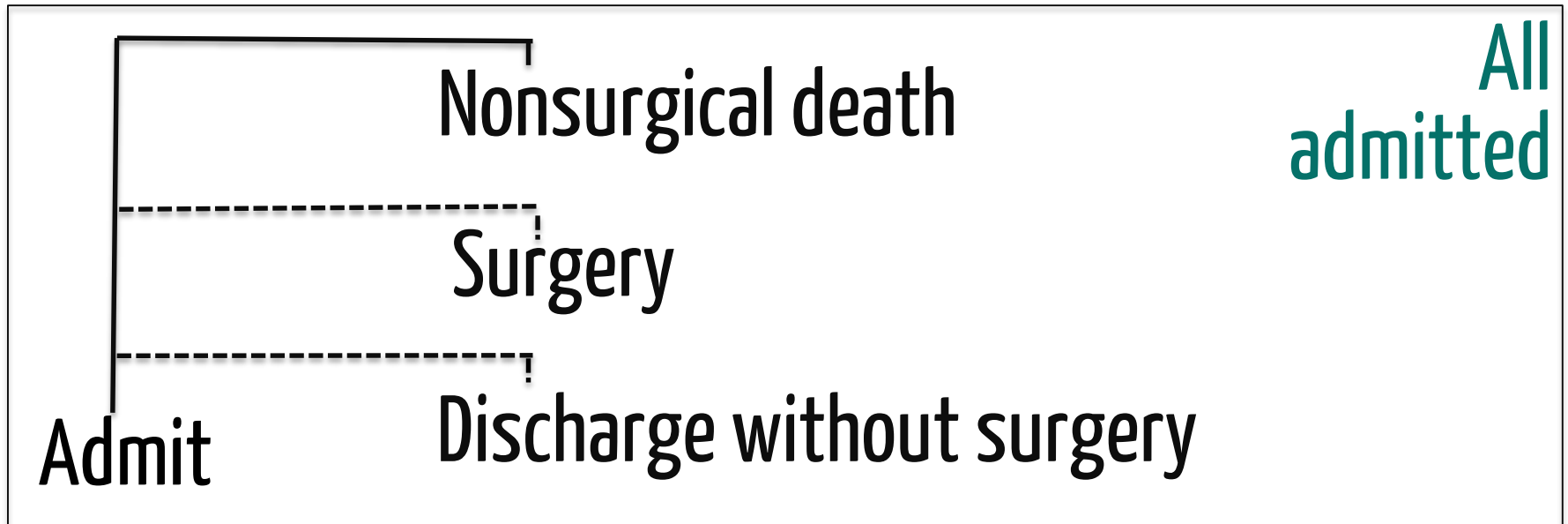
# what is known?

- Differences in bed capacity?
- Differences in type of death?
- Differences in length of stay?

# objective

Compare the risks of nonsurgical and postsurgical death by teaching status and bed capacity accounting for differences in length of stay

# competing events

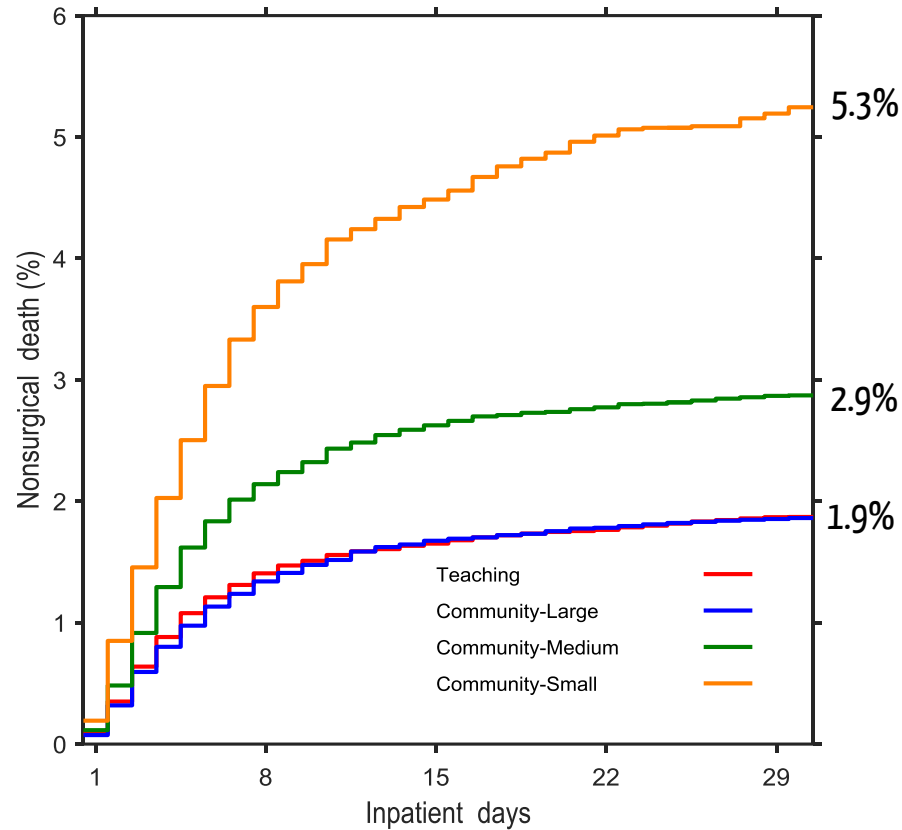


# cumulative incidence function

- The time dependent marginal probability that an event occurs at or before a certain time in the presence of competing events

	All types		Teaching		Community-Large (>200 beds)		Community-Medium (50-199 beds)		Community-Small (<50 beds)	
	n = 168,340		n = 58,799		n = 68,743		n = 29,684		n = 9,343	
Age at admission (years)	n	%	n	%	n	%	n	%	n	%
65-84	90998	54	31956	54	36912	54	16028	54	5040	54
85+	77342	46	26843	46	31831	46	13656	46	4303	46
Sex										
Women	122696	73	42680	73	50280	73	21746	73	6684	72
Men	45625	27	16118	27	18462	27	7933	27	2648	28
Comorbidities										
Heart failure	14250	9	5048	9	5709	8	2488	8	840	9
COPD	9315	6	3117	5	3604	5	1816	6	651	7
Ischemic heart disease (acute)	10614	6	3928	7	4151	6	1864	6	550	6
Cardiac dysrhythmias	16023	10	5526	9	6733	10	2758	9	848	9
Ischemic heart disease (chronic)	2955	2	1048	2	1240	2	481	2	147	2
Hypertension	9982	6	3453	6	4254	6	1688	6	495	5
Diabetes	7862	5	2877	5	3125	5	1325	5	463	5

# nonsurgical death by hospital type

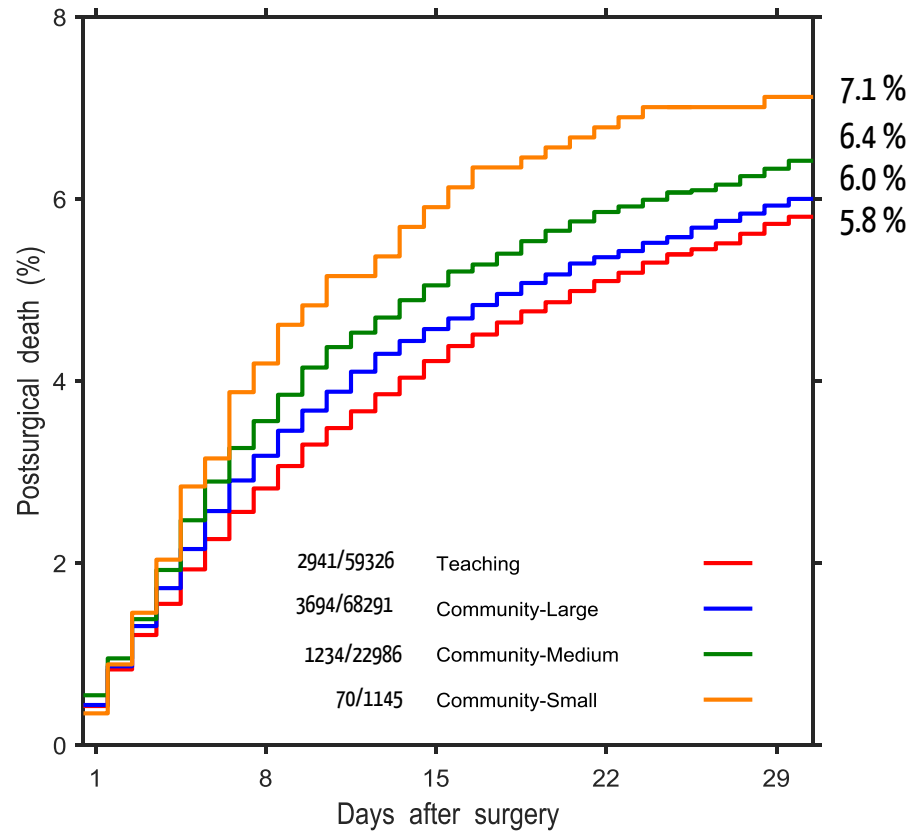


# nonsurgical death vs. teaching

- large – similar
- medium -1.5 times higher
- small - 2.6 times higher



# postsurgical death by hospital type



# postsurgical death vs. teaching

- large – similar
- medium -13% higher
- small – 18% higher (CI overlap 1)

# conclusions

- large – similar to teaching
- medium/small-higher than teaching
- higher odds driven by nonsurgical death

# Canadian Collaborative Study of Hip Fractures

- Lauren Beaupre (AB)
- Eric Bohm (MB)
- Michael Dunbar (NS)
- Donald Griesdale (BC)
- Pierre Guy (BC)
- Edward Harvey (QC)
- Erik Hellsten (ON)
- Susan Jaglal (ON)
- Hans Kreder (ON)
- Lisa Kuramoto (BC)
- Adrian Levy (NS)
- Suzanne Morin (QC)
- Katie Sheehan (BC)
- Boris Sobolev (BC)
- Jason Sutherland (BC)
- James Waddell (ON)