



FAMILY MEDICINE GROUPS AND VISITS TO THE EMERGENCY DEPARTMENT AMONG DIABETICS IN QUEBEC BETWEEN 2000 AND 2011

Renee Carter, Ph.D. candidate, McGill University

Amélie Quesnel-Vallée, Ph.D., McGill University

Céline Plante, M.Sc., Institut national de santé publique du Québec

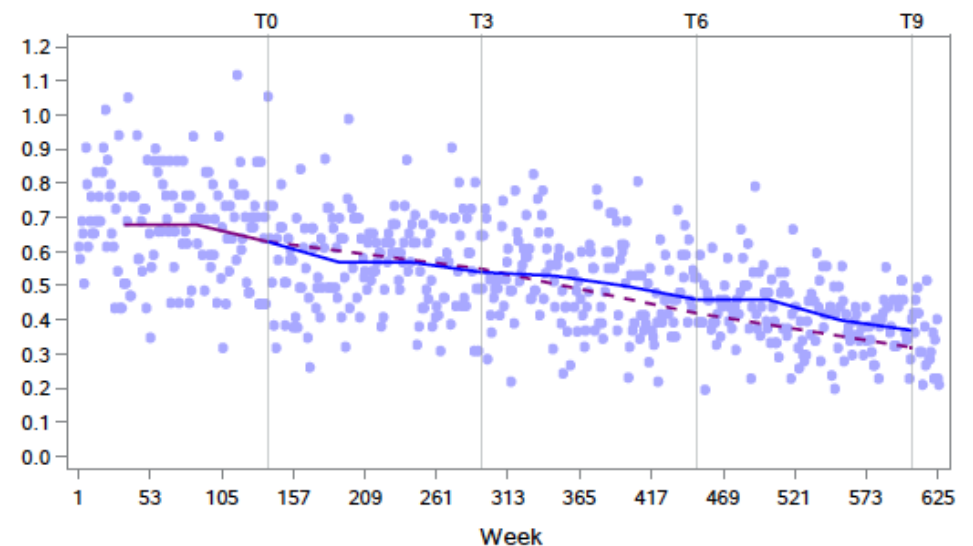
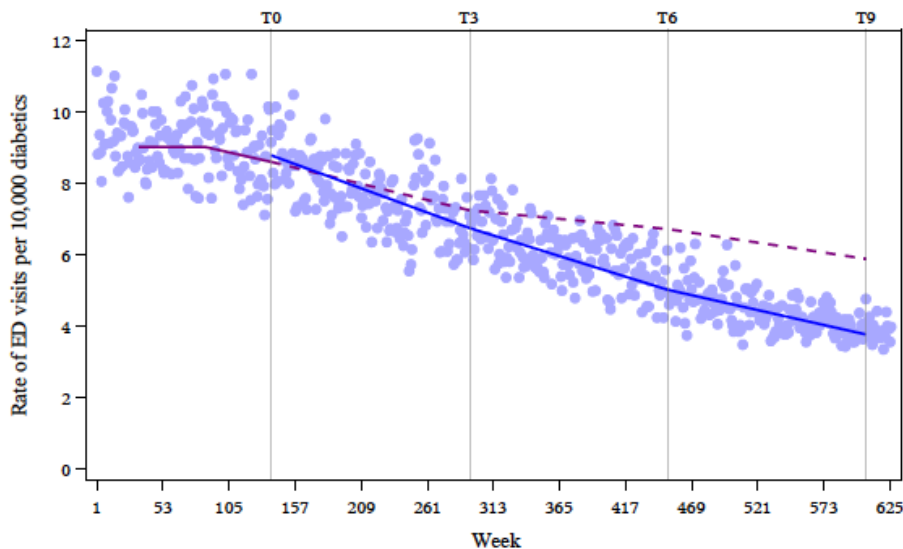
Philippe Gamache, B.Sc., Institut national de santé publique du Québec

Jean-Frédéric Lévesque, Ph.D., M.D., Bureau of Health Information, Australia

Poster session: Today at 11:15 (Fontaine AB, Board 46)

Summary

- Objective
 - To identify the effect of the reform on visits to the emergency department to treat acute diabetes related complications



- Policy relevance
 - Ambulatory care sensitive conditions and avoidable emergency department use
 - Potential to scale-up the model to improve support for team-based practice